

**Location:** Desmond Fish Public Library,  
Garrison NY

## Building a Pollinator Habitat with Community Partners



Photo Kristi Sullivan, Master Naturalist Program, DNR Cornell U.

### Issue:

Pollinators are threatened across the world. In a four-year study of NY State's pollinators, more than one-third face extirpation (NYS DEC & SUNY ESF 2022). Creating native plant habitat free of invasive, competitive species helps to offset habitat loss and educate the public.

### Extension Response:

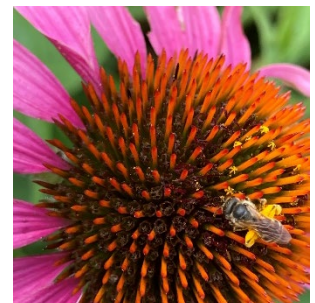
Collaborating with Putnam County Soil & Water Conservation District, CCE Putnam educator Jen Lerner along with Master Gardener, Master Naturalist, and community volunteers, established a native plant habitat at the Desmond Fish Public Library. The habitat is directly adjacent to the library's popular walking trail. Educational programs at the library dovetail with this effort. Attractive interpretive and interactive signage have been designed for the garden.

### Impacts:

- 20 Master Garden, Master Naturalist and community volunteers engaged.
- 3 Programs planned focus on pollinator and native plant habitat (2022-2023).
- 1 iNaturalist Project set up to capture habitat change.
- 100s Trail walkers enjoying the walking trail and habitat.

### Partners:

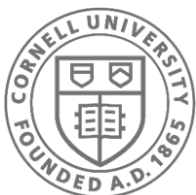
Soil & Water Conservation District of Putnam County  
The Desmond Fish Public Library  
The Philipstown Garden Club  
Constitution Marsh Audubon



Sweat bee on echinacea, Jen Lerner

**Contact Name:** Jen Lerner

**Contact email:** [jj95@cornell.edu](mailto:jj95@cornell.edu)



Terravest Corporate Park, 1 Geneva Rd., Brewster, NY 10509  
[putnam.cce.cornell.edu](http://putnam.cce.cornell.edu)    [putnam@cornell.edu](mailto:putnam@cornell.edu)

Cornell University Cooperative Extension provides equal program and employment opportunities. Please contact our office if you have any special needs.